

Instructions for MacOS Manual Deployment of SAP GUI for JAVA Revision 10

SAP GUI for JAVA revision 10

Installation: Software

Prerequisites

Prepare the Mac OS by installing the following software

HARDWARE

- Hardware according to the requirements of the OS X version.

JAVA SOFTWARE

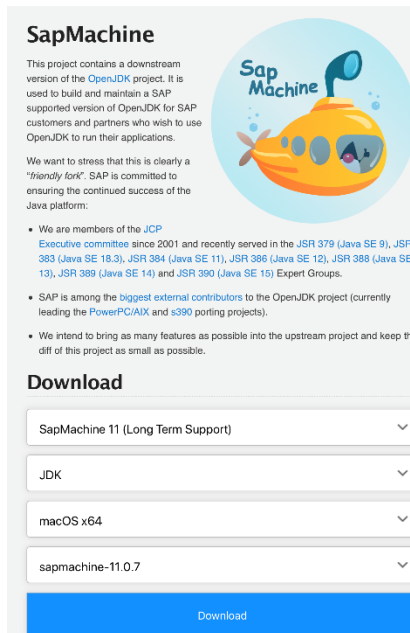
To run SAP GUI for Java as stand-alone application, the installation of the JDK is required.

- Oracle **Java SE 8** (update 40 or newer):
<https://www.oracle.com/technetwork/java/javase/downloads/index.html>

Recommended (tested) approach is to use **Oracle Java SE 8** (v.40 or newer) which has the JavaFX SKD bundled and no additional setup is required if this version is the default version on the Mac OS

or

- **SapMachine 11** and **OpenJFX 11**:
<https://sap.github.io/SapMachine/>
<https://openjfx.io>



SapMachine

This project contains a downstream version of the OpenJDK project. It is used to build and maintain a SAP supported version of OpenJDK for SAP customers and partners who wish to use OpenJDK to run their applications.

We want to stress that this is clearly a "friendly fork". SAP is committed to ensuring the continued success of the Java platform:

- We are members of the JCP Executive committee since 2001 and recently served in the JSR 379 (Java SE 9), JSR 383 (Java SE 10), JSR 384 (Java SE 11), JSR 386 (Java SE 12), JSR 388 (Java SE 13), JSR 389 (Java SE 14) and JSR 390 (Java SE 15) Expert Groups.
- SAP is among the biggest external contributors to the OpenJDK project (currently leading the PowerPC/AIX and s390 porting projects).
- We intend to bring as many features as possible into the upstream project and keep the diff of this project as small as possible.

Download

SapMachine 11 (Long Term Support) ▼

JDK ▼

macOS x64 ▼

sapmachine-11.0.7 ▼

Download

Note: If a user prefers to run Java 11, please follow the Installation Instructions for SapMachine 11 + OpenJFX 11:

- Download versions 11 LTS (for both) from the links above

- Just unpack the Java VM distribution package and the OpenJFX distribution package below
/Library/Java/JavaVirtualMachines
- To test/verify, use the command:
/usr/libexec/java_home -V
- Then make sure that this is the default Java version or set the path to the JDK bundle with the OS X user defaults system for domain com.sap.platin and key JDKPATH.
- The module path to load the JavaFX modules will then be
/Library/Java/JavaVirtualMachines/javafx-sdk-11/lib

OPERATING SYSTEM VERSION

- macOS Sierra 10.12
- macOS High Sierra 10.13.2 and newer

With macOS High Sierra older than 10.13.2 there is an issue with the Mac menus.

- macOS Mojave 10.14
- macOS Catalina 10.15.5

However, there are some known issues (check at the end of this document).

- It might run fine on older versions as well, but this is neither tested nor officially supported.

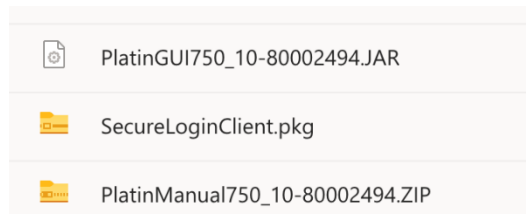
OTHER SOFTWARE

- If a new install download and install the SafeNet Authentication client and CISCO Anyconnect VPN otherwise it is safe to skip this step.

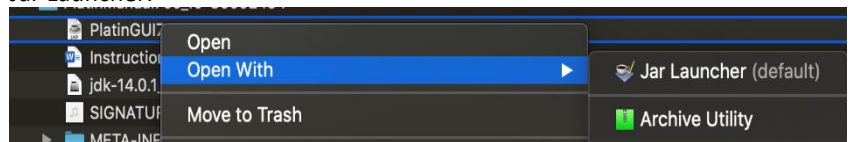
<https://secure.sis.utoronto.ca/>

SAP GUI for Java Installation

1. Download the SAPGUI for Java software from the link below:
<https://uoft.me/sap-gui-for-java-new>

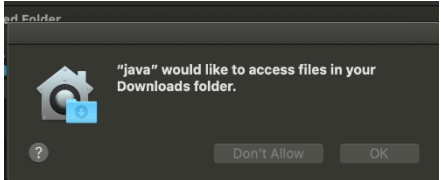


2. Extract the ZIP file and run the PlatinumGUI installer (for example the PlatinGUI750_10-80002494.JAR file). Right click on JAR file and “Open With” Jar Launcher.

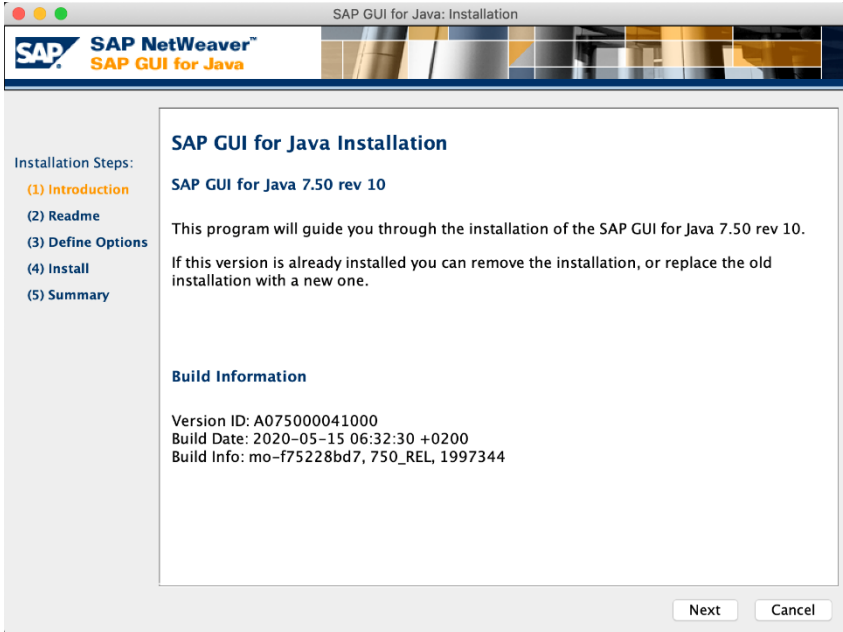




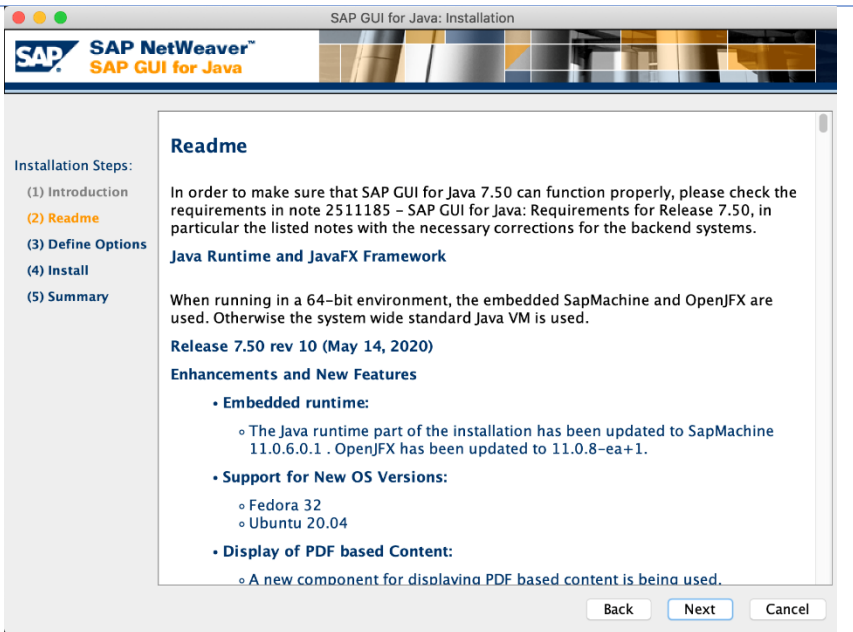
Choose open



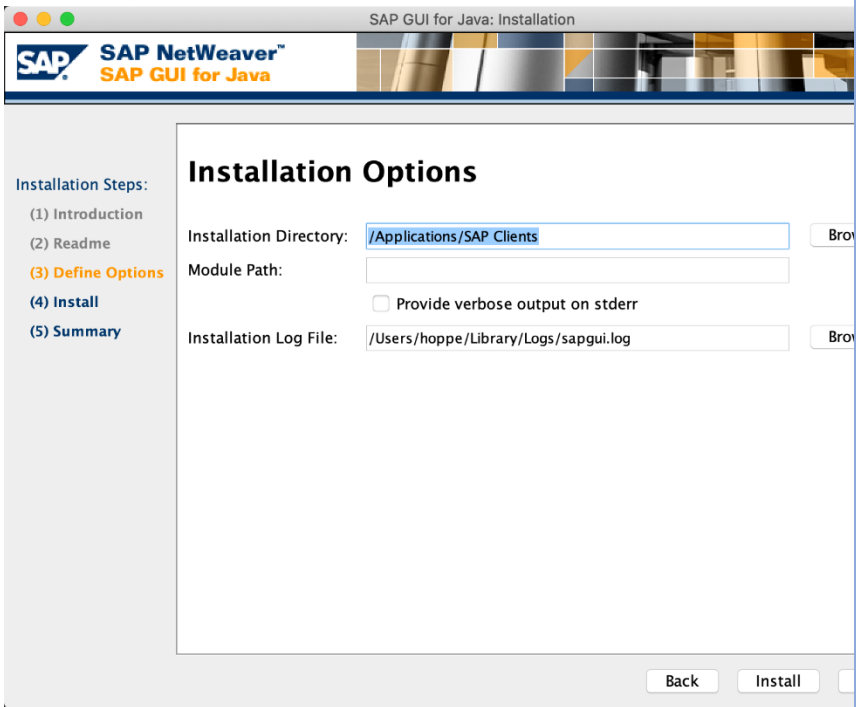
Choose Ok



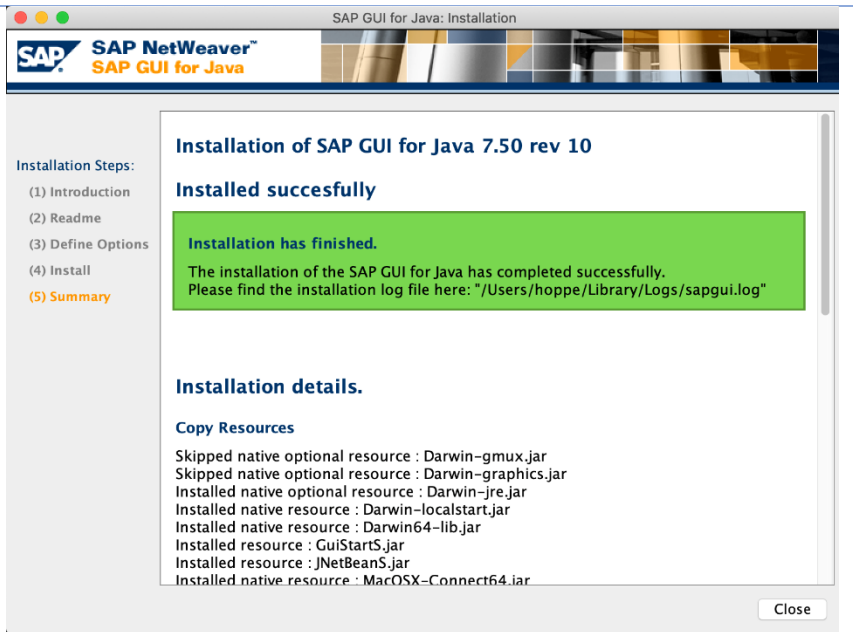
Click Next



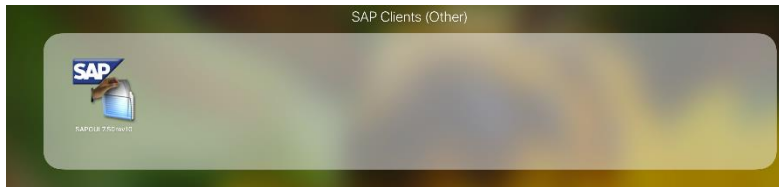
Click Next



Click Next



We can see the SAP Gui icon in the Finder.



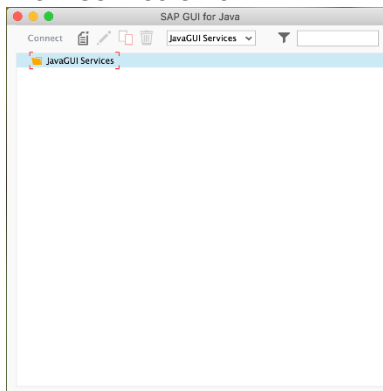
3. If a new install download and install the downloaded **SAP Secure Login Client Package** called "SecureLoginClient.pkg". Otherwise it is safe to skip this step.

Note: You may have to use "Control + Click" to open the .JAR and .pkg installers and accept the warning as explained here: <https://support.apple.com/en-ca/guide/mac-help/mh40616/mac>

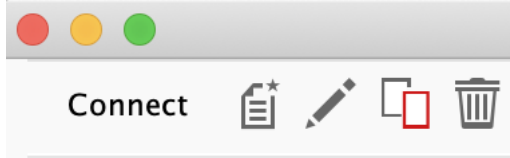
Adding New Systems

Following the guide provided above, please repeat the steps 9 to 12 for the required systems from the following list

1. Launch SAPGUI
Local Mac Root Drive (example: Macintosh HD) ▶ Applications ▶ SAP Clients ▶ SAPGUI 7.50rev10



2. In the SAP GUI for Java window that opens, if there are no connections listed, Click the **New icon** (a page with a * at the top right) and select tab **Advanced**. Check off **Expert mode** and create the required connections:

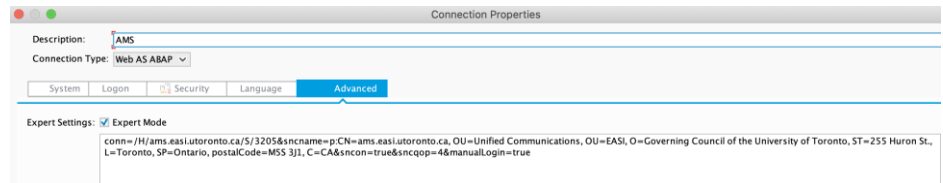


3. Example:

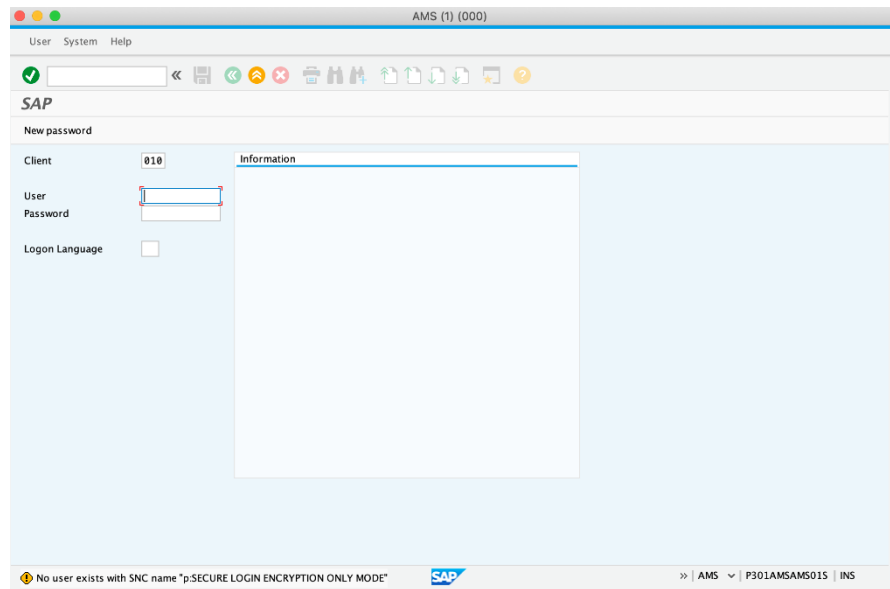
- a. Description: AMS [HANA]
- b. `conn=/H/ams.easi.utoronto.ca/S/3205&sncname=p:CN=ams.easi.utoronto.ca, OU=EASI, O=The Governing Council of the University of Toronto, ST=255 Huron St., L=Toronto, SP=Ontario, postalCode=M5S 3J1, C=CA&sncon=true&sncqop=9&>manualLogin=true`

4. Repeat for all systems (listed below in this guide)

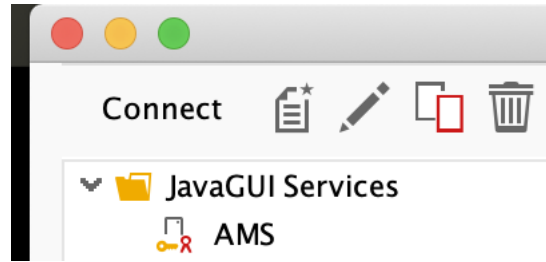
Example screenshot for SAP System AMS [Cloud] – with SNC enabled



Also check the security tab. Use manual login (no SSO) box should be checked off.



SAP AMS example login page.



Note that the GUI Entry will have a “Lock” displayed next to its name. This indicates SNC is active.

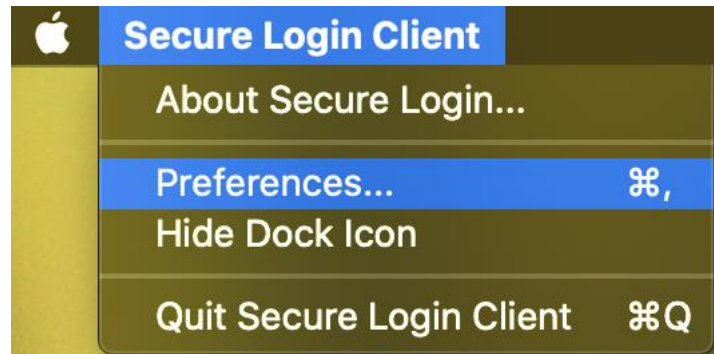
Additional Systems List

Please use the table at the end of this document, which contain all connection strings

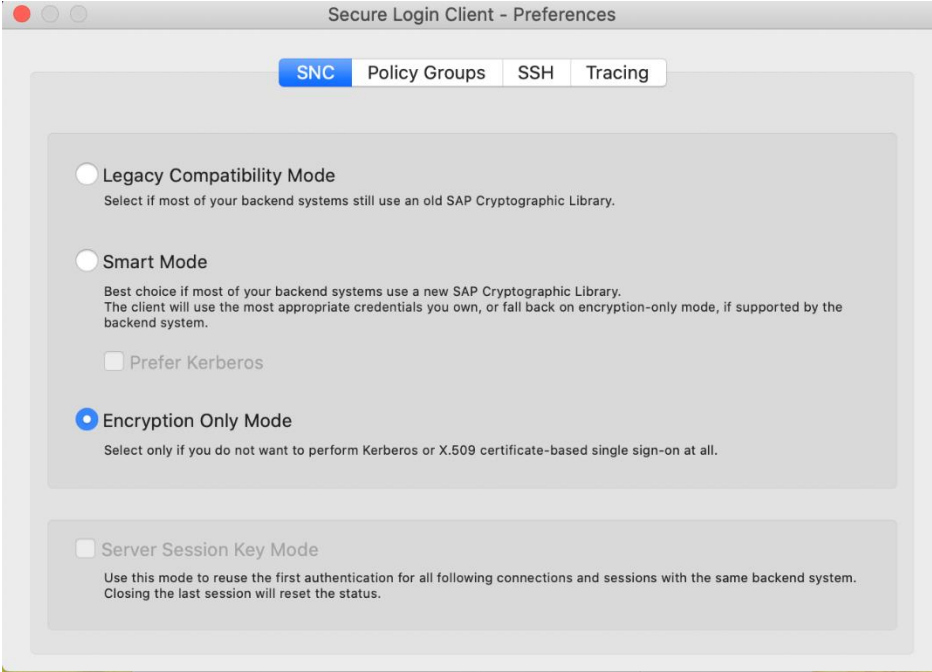
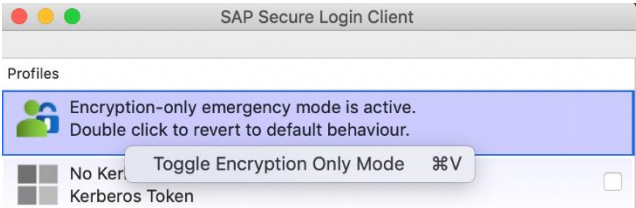
Troubleshooting

In case of SNC connection does not open, please check if any of the following steps is applicable

1. Check if SAP Secure Client is running in Encryption Only Mode (Menu bar > Preferences > SNC tab)



2. Check if SAP Secure Client Profile “Encryption-only mode”. (Menu bar > Show Profiles > Select “Encryption-only Profile”)
If not, double-click to toggle the modes

	  <p>3. SAP Secure Client has to start prior SAP Gui for Java. If not, completely close SAP Gui for Java and reopen in after SAP Secure Client is already running</p>
<p>Known Issues: additional SAP notes on the JAVA Gui</p>	<p>2511185 - SAP GUI for Java: Requirements for Release 7.50 2511822 - SAP GUI for Java 7.50 Release Notes</p>

SAP GUI for Java Connection strings (Advanced mode)

This section has been cleaned with older obsolete system removed. The new entries are marked in yellow at the bottom of this list.

Description	SAP Gui for Java Connection Entry ("Conn=" value)
AMS [Cloud]	conn=/H/ams.easi.utoronto.ca/S/3205&sncname=p:CN=ams.easi.utoronto.ca, OU=EASI, O=The Governing Council of the University of Toronto, ST=255 Huron St., L=Toronto, SP=Ontario, postalCode=M5S 3J1, C=CA, C=CA&sncon=true&snqop=4&manualLogin=true

LRN [Cloud]	conn=/H/lrn.easi.utoronto.ca/S/3211&sncname=p:CN=lrn.easi.utoronto.ca, OU=Unified Communications, OU=EASI, O=Governing Council of the University of Toronto, ST=255 Huron St., L=Toronto, SP=Ontario, postalCode=M5S 3J1, C=CA&sncon=true&snqcqp=4&manualLogin=true
QNA [Cloud]	conn=/H/qna.easi.utoronto.ca/S/3214&sncname=p:CN=qna.easi.utoronto.ca, OU=Unified Communications, OU=EASI, O=Governing Council of the University of Toronto, ST=255 Huron St., L=Toronto, SP=Ontario, postalCode=M5S 3J1, C=CA&sncon=true&snqcqp=4&manualLogin=true
PBW [Cloud]	conn=/H/pbw.easi.utoronto.ca/S/3208&sncname=p:CN=pbw.easi.utoronto.ca, OU=Unified Communications, OU=EASI, O=Governing Council of the University of Toronto, ST=255 Huron St., L=Toronto, SP=Ontario, postalCode=M5S 3J1, C=CA&sncon=true&snqcqp=4&manualLogin=true
RPT [Cloud]	conn=/H/rpt.easi.utoronto.ca/S/3210&sncname=p:CN=rpt.easi.utoronto.ca, OU=Unified Communications, OU=EASI, O=Governing Council of the University of Toronto, ST=255 Huron St., L=Toronto, SP=Ontario, postalCode=M5S 3J1, C=CA&sncon=true&snqcqp=4&manualLogin=true
SRP [Cloud]	conn=/H/srp.easi.utoronto.ca/S/3242&sncname=p:CN=srp.easi.utoronto.ca, OU=Unified Communications, OU=EASI, O=Governing Council of the University of Toronto, ST=255 Huron St., L=Toronto, SP=Ontario, postalCode=M5S 3J1, C=CA&sncon=true&snqcqp=4&manualLogin=true
SRQ [Cloud]	conn=/H/srq.easi.utoronto.ca/S/3243&sncname=p:CN=srq.easi.utoronto.ca, OU=Unified Communications, OU=EASI, O=Governing Council of the University of Toronto, ST=255 Huron St., L=Toronto, SP=Ontario, postalCode=M5S 3J1, C=CA&sncon=true&snqcqp=4&manualLogin=true
SRR [Cloud]	conn=/H/srr.easi.utoronto.ca/S/3241&sncname=p:CN=srr.easi.utoronto.ca, OU=Unified Communications, OU=EASI, O=Governing Council of the University of Toronto, ST=255 Huron St., L=Toronto, SP=Ontario, postalCode=M5S 3J1, C=CA&sncon=true&snqcqp=4&manualLogin=true
TNG [Cloud]	conn=/H/tng.easi.utoronto.ca/S/3209&sncname=p:CN=tng.easi.utoronto.ca, OU=Unified Communications, OU=EASI, O=Governing Council of the University of Toronto, ST=255 Huron St., L=Toronto, SP=Ontario, postalCode=M5S 3J1, C=CA&sncon=true&snqcqp=4&manualLogin=true
SRS [Cloud]	conn=/H/srs.easi.utoronto.ca/S/3238&sncname=p:CN=srs.easi.utoronto.ca, OU=Unified Communications, OU=EASI, O=Governing Council of the University of Toronto, ST=255 Huron St., L=Toronto, SP=Ontario, postalCode=M5S 3J1, C=CA&sncon=true&snqcqp=4&manualLogin=true
AMS [HANA]	conn=/H/ams.easi.utoronto.ca/S/3205&sncname=p:CN=ams.easi.utoronto.ca, OU=EASI, O=The Governing Council of the University of Toronto, ST=255 Huron St., L=Toronto, SP=Ontario, postalCode=M5S 3J1, C=CA&sncon=true&snqcqp=9&manualLogin=true
QS1 [HANA]	conn=/H/qs1.easi.utoronto.ca/S/3200&sncname=p:CN=qs1.easi.utoronto.ca, OU=EASI, O=Governing Council of the University of Toronto, ST=255 Huron St., L=Toronto, SP=Ontario, postalCode=M5S 3J1, C=CA&sncon=true&snqcqp=4&manualLogin=true

QS1 [ECC]	conn=/H/qs1- ecc.easi.utoronto.ca/S/3200&sncname=p:CN=qs1.easi.utoronto.c a, OU=EASI, O=Governing Council of the University of Toronto, ST=255 Huron St., L=Toronto, SP=Ontario, postalCode=M5S 3J1, C=CA&sncon=true&sncqop=4&manualLogin=true
QT1 [HANA]	conn=/H/qt1.easi.utoronto.ca/S/3200&sncname=p:CN=qt1.easi.ut oronto.ca, OU=EASI, O=The Governing Council of the University of Toronto, ST=255 Huron St., L=Toronto, SP=Ontario, postalCode=M5S 3J1, C=CA&sncon=true&sncqop=4&manualLogin=true
SS1 (HANA)	conn=/H/ss1.easi.utoronto.ca/S/3200&sncname=p:CN=ss1.easi.ut oronto.ca, OU=EASI, O=The Governing Council of the University of Toronto, ST=255 Huron St., L=Toronto, SP=Ontario, postalCode=M5S 3J1, C=CA&sncon=true&sncqop=4&manualLogin=true